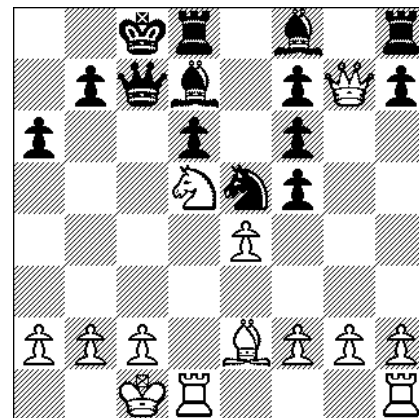


# "Landskamp" i Aalborg Skakforening!

På næste tirsdag, d. 27/3 spiller vi igen en internet-match mod den hollandske klub Voorschoten. Vi starter kl. 19.00 og ALLE kan være med til at diskutere og stemme om de trækmuligheder, som brætfører Lars Venø Jacobsen foreslår. De fleste husker sikkert, hvordan vi for præcis 3 år siden lammetævede vores hollandske skakvenner i et pragtfuldt kampparti. Hvis ikke, så er her partiet, med kommentarer af Frits Fritschy fra Voorschoten

**1.e4 c5 2.Pf3 Pc6 3.d4 cxd4 4.Pxd4 Pf6 5.Pc3 d6 6.Lg5 Db6 7.Pb3 e6 8.Df3** I'm glad it's still possible to find new 8th moves in the Sicilian. Not that we were aware of playing a novelty. The Encyclopedia of Chess openings 1975 (before the era of databases) gives as main variation 8.Ld3 Le7 9.0-0 0-0 10.Kh1 Ld7 11.De2 and white gets the initiative, according to Minev. Yeah, the sun may shine but rain is also possible. **8. Le7 9.0-0-0 a6** We had some doubts about this move. After 9.. Ld7 10.Le3 Dc7 11.Pb5 Db8 I don't see anything special for white (12.Dg3? Pxe4 13.Dxg7 Lf6 14.Pxd6+ Dxd6). Maybe 9.. Ld7 10.Pd2 is an idea? **10.Dg3 Ph5 11.Dh4 Pf6 12.Le2** We also looked at 12.f4, which is good after De3+ but nothing special if black plays Ld7. Of course 12. Dg3 wasn't an option. We now first ruled out 12.Le2 Dc7 13.Dg3 Ld7 14.Lxf6 gxf6 15.Dg7 0-0-0 16.Dxf7. After the long delay (and lots of other variations) we were a bit too eager to resume play... **12.. Dc7 13.Dg3 Ld7 14.Lxf6?** 14.f4 0-0-0 15 e5! dxe5 16.fxe5 Dxe5 17.Lf4 Df5 18.Pd4 gives white a dangerous attack and after 14.f4 0-0 15.e5 dxe5 16.fxe5 Pe8 17.Lxe7 Pxe7 18.Ld3 I'd rather have white. But there are some interesting variations for black with 14.. h6 15.Lh4 Tg8! followed by g5, to conquer the e5 square for the knight. So maybe the best is 14.Le3 0-0 15.f4, and I could give you another Dutch weather forecast. **14. gxf6 15.Dg7 0-0-0** Now the fog lifted: 16.Dxf7 h5! We missed that. To be honest, we also missed 17.Pd4! and even in your variation 17.g3 (or Thg1) Tdf8 18.Dg7 Tfg8 19.Df7 Kd8?! white can complicate matters with 20.Pd4, for example 20.. Dc8 21.Pxc6 bxc6 22.Lc4 d5? 23.exd5 cxd5 24.Lxd5! (Tf8 25.Dxe6!) and wins. But variations in which black can draw at any moment weren't very appealing to us. So, objectively, the next move may not be the best, but at least chances aren't so one-sided as after 16.Dxf7. **16.Pd4 Pe5?** We had something ready for that. But of course 16.. Tdf8 is good for black, although white can fight with 17.f4, after which 17.. Le8 isn't much because of 18.f5 and 17.. Thg8 18.Dxh7 Th8 (Txg2 19.f5) 19.Dg7 Thg8 might be a draw. **17.Pf5! exf5** After 17.. Lf8 we had, apart from the queen sacrifice you suggested, another good variation: 18.Dxf6 Tg8 19.f4 Txg2 (19.. exf5 leads back to the game continuation) 20.fxe5 exf5 21.Lf3 Tg6 22.Dxf7 Le6 23.Dxc7+ Kxc7 24.Pd5+ with advantage. **18.Pd5 Lf8**



Stillingen efter 18. ... Lf8

**19.Dxf6 Dc5 20.f4 Tg8** We had a nice variation after the tricky move 20.. Pg6: 21.Td3! (21.exf5? Pe7! 22.Pxe7+ Lxe7 23.Dxe7 The8) 21.. Lc6 22.Tc3 Da5 23.b4! Dxa2 24.Dxf7! and wins. **21.fxe5 fxe4 22.b4 Dc6 23.Td4 b5 24.Thd1** At this point, we were very optimistic again. The mood wasn't right for playing a quiet move like 24.g3! In that case black can either equalise with 24.. dxe5 25.Pb6+! Kb7! 26.Txd7+ Txd7 27.Pxd7 Dxd7 28.Dxe5 De7 29.Dxe7 Lxe7 or force a tight-rope walk with 24.. Tg6 25.Dxf7 dxe5 26.Txe4 Le6 27.Dxf8 Lxd5 28.Df5+ Kb7 29.Ld3 Le6 30.Df3 Txd3 31.Dxd3 Lf5 32.Tf1! Lxe4 33.Tf7+ with perpetual check (I had some electronic aid in this one). Worse is 24.. Le6 25.Thd1 Tg6 26.Dh4! (Te8 27.Dxe4). **24. Txg2! 25.Txe4 Le6** Suddenly the position looked less attractive here, so we decided to play some *schwindle* moves. **26.c4 dxe5 27.Dxe5 Lxd5** At this point someone shouted that the endgame after 28.Txd5 was lost. Maybe we were looking at the wrong position, but (thinking we had only three minutes left) it sounded convincing. So we decided to die fighting. **28.Ted4??** But we were fighting windmills, of course. There is no reason why white should lose the ending after 28.Txd5 Txd5 29.Dxd5 Dxd5 30.cxd5 Kd7 31.Kd1 Txh2 32.Tf4 Ke7 33.d6+, for example 33.. Kxd6 34.Txf7 Le7 35.a3 Ke6 36.Tg7 h5 37.Tg8 followed by Ta8. **28. Te8** We missed that and probably more. **29.Df5+ Le6 30.Df6 Txe2 31.Td8+** Can we scare you? **31.. Kb7** No, so it's time to resign.